



BANDWIDTH IG

HEADQUARTERS:

BANDWIDTH INFRASTRUCTURE GROUP, LLC
530 LAKESIDE DRIVE – SUITE 190
SUNNYVALE, CA 94085

ATLANTA OFFICE:

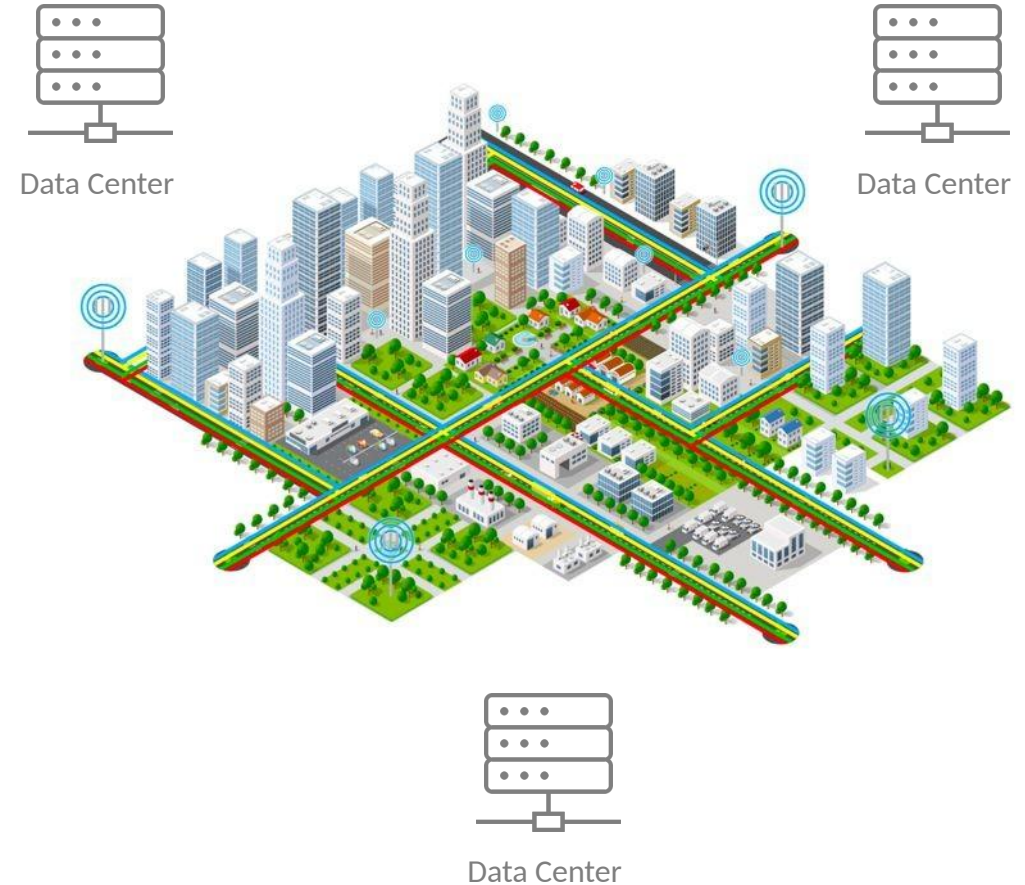
BANDWIDTH INFRASTRUCTURE GROUP, LLC
1175 PEACHTREE STREET, NE
ATLANTA, GA 30361



Bandwidth Infrastructure Group (Bandwidth IG) builds and operates mission-critical fiber infrastructure that underpins the world's most innovative companies throughout the San Francisco Bay Area, Greater Atlanta and the Hillsboro area of Greater Portland, Oregon.

Bandwidth IG is backed by Columbia Capital and SDC Capital Partners, well capitalized equity partners with extensive experience in digital infrastructure and high tech.

**Empowering digital technologies
that transform our lives for the better**





WHAT MAKES US DIFFERENT

PURPOSE-BUILT INFRASTRUCTURE

Our fiber infrastructure is built to be different from legacy fiber networks. Our network is intentionally designed to reduce signal loss and latency. Our 100% underground fiber infrastructure offers maximum diversity and a highly scalable inventory.

FORTIFIED SOLUTIONS

We strategically design and place our infrastructure where others are not. We combine deep local knowledge and customized designs to build critical infrastructure that solves significant challenges for our customers.

AGILE ORGANIZATION

We are not a large incumbent organization with decades of processes and systems that make speed and flexibility harder. We are smaller, efficient, laser focused on fiber, and adapt quickly to the changing digital world.

CUSTOMER OBSESSED

We bring more than a customer-first approach to our business — we bring a *customer-obsessed* approach. We're consumed with making sure our customers have the foundational infrastructure to create amazing technologies that change lives for the better.



PURPOSE-BUILT INFRASTRUCTURE

LOW SIGNAL LOSS

- Newly built and 100% underground networks
- Infrastructure that is built, owned, and operated by Bandwidth IG
- State-of-the-art homogenous SMF cable
- Minimal splice points

MAXIMUM DIVERSITY & RESILIENCY

- Maintain route diversity from legacy networks
- Multiple unique routes and multi-ring architecture
- Avoid common trenches and major ROW's to ensure true diversity
- Avoid less reliable aerial fiber routes

LOW LATENCY

- Laser focus on data center to data center routes
- Avoid routing through congested cell towers or commercial buildings
- Designed for the shortest, most unique path

HIGHLY SCALABLE INVENTORY

- Minimum 1728 fiber count in core rings
- Multi-duct package for long-term growth
- Pre-positioned fibers for industry-leading intervals
- All Single-Mode ITU G.657.A1 & G.652.D



WHO WE SERVE

Bandwidth IG provides mission critical dark fiber to a range of industry-leading technology enablers, including:



Data Center Operators
Cloud and Content



Wholesale and Carriers
Large Enterprises



Artificial Intelligence / Machine Learning
Platforms



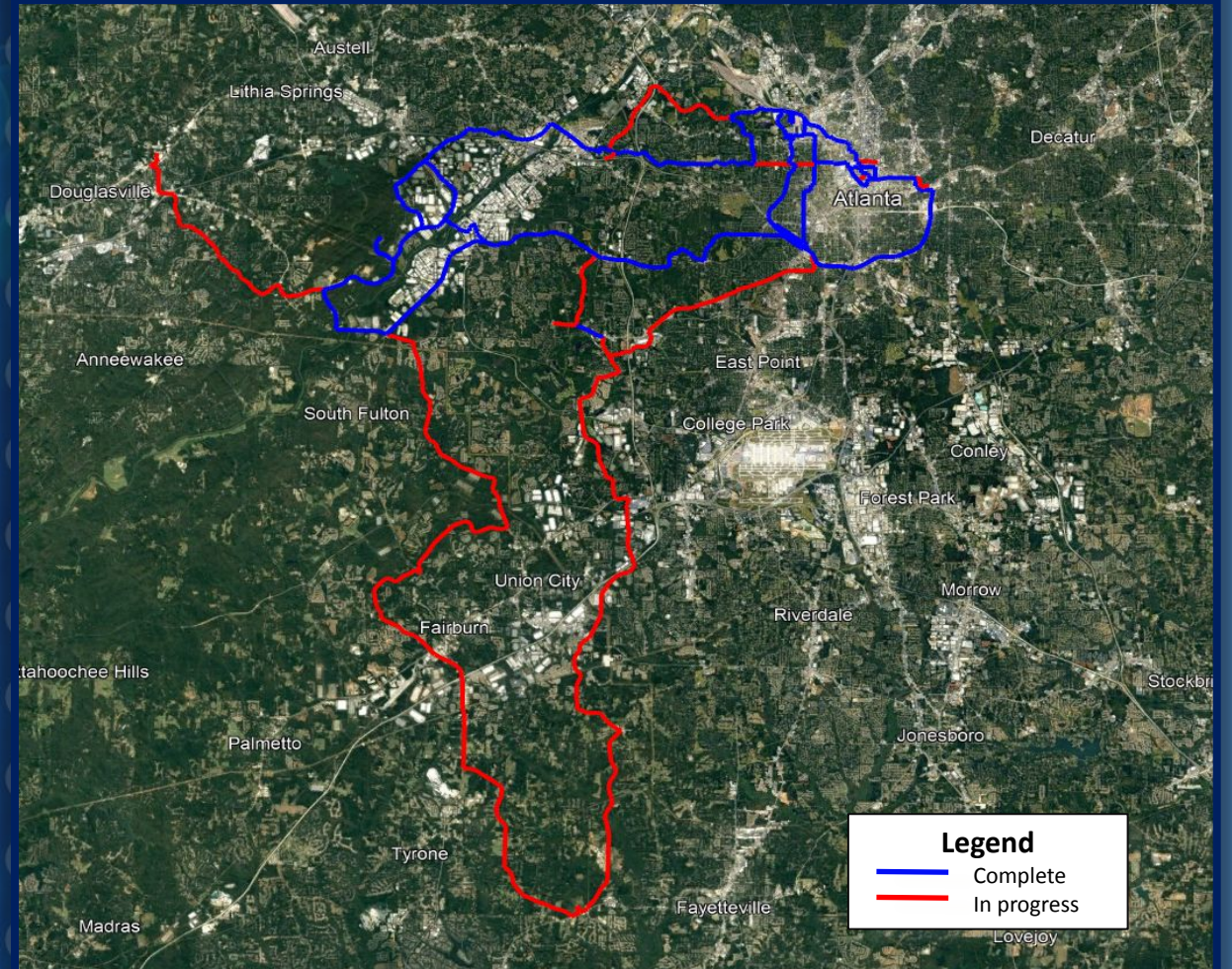
MARKET VIEWS



MARKET VIEWS

Greater Atlanta

- 148 route miles
- 255,000 fiber miles
- 20+ data centers
- 100% buried SMF

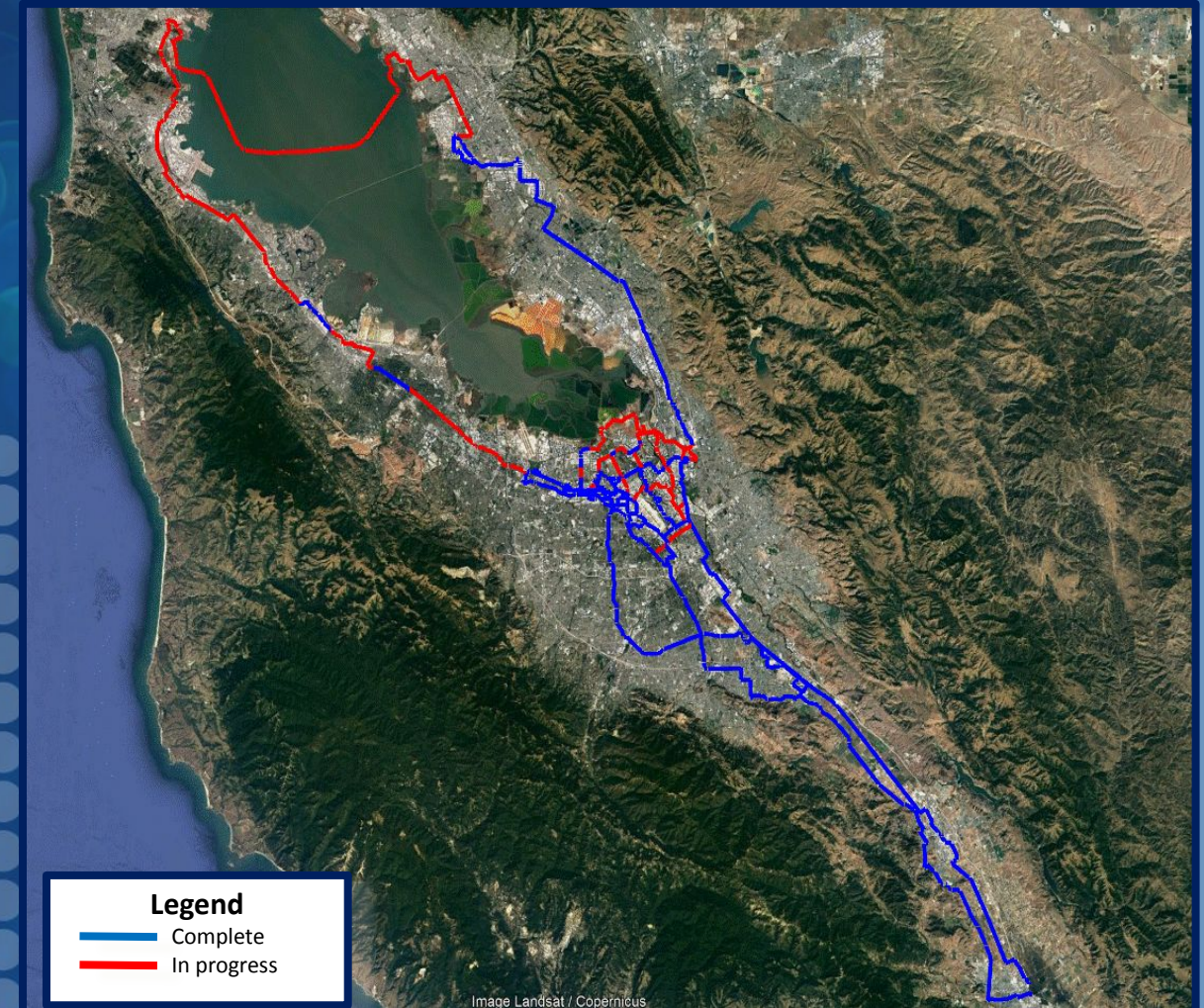




MARKET VIEWS

San Francisco Bay Area

- 273 route miles
- 470,000 fiber miles
- 65+ data centers
- 100% buried SMF
- Unique Bay Crossing
- 3 Diverse Routes from SC to Great Oaks

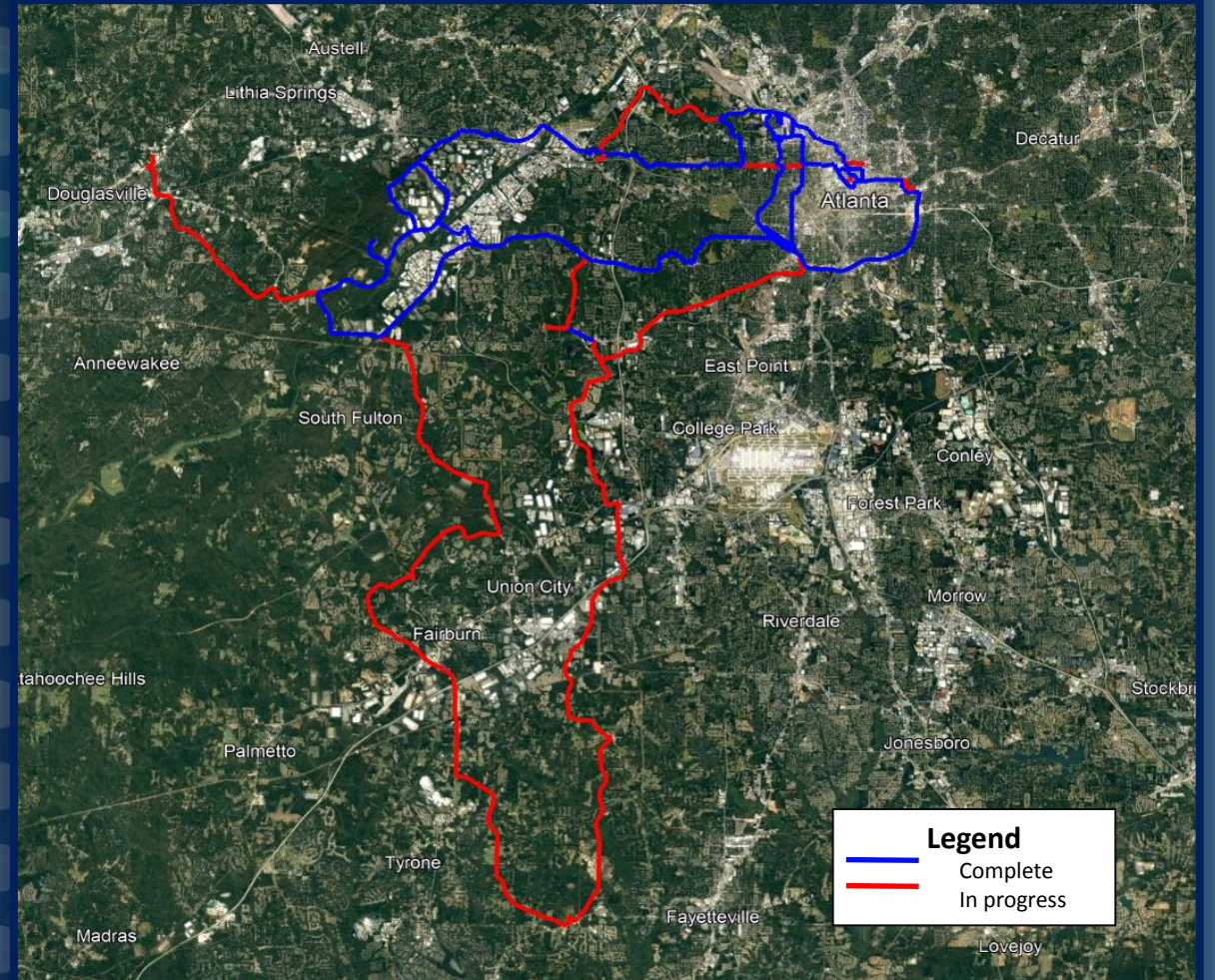




MARKET VIEWS

Greater Atlanta

- 148 route miles
- 255,000 fiber miles
- 20+ data centers
- 100% buried SMF





MARKET VIEWS

Greater Portland

- 20 route miles
- 34,000 fiber miles
- 15+ data centers
- 100% buried SMF

